

CB187EXT - CX187EXT

hotbath
italian bathroomware

Trim parts for floor-standing bathtub mixer

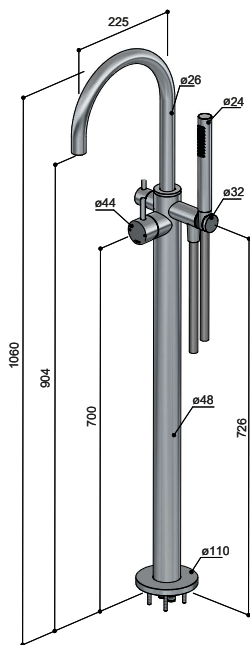
Parti esterne per miscelatore per vasca da pavimento

Parties extérieures pour mitigeur de baignoire sur colonne au sol

Partes exteriores para monomando de bañera a pavimento

AP-Teile für Bodenmontierten Wannenmischer

Afbouwdeel vrijstaande badmengkraan



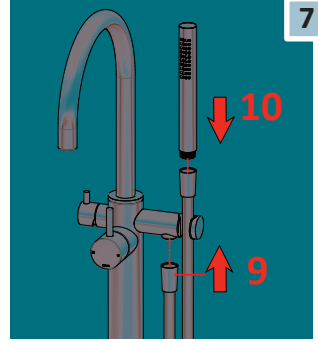
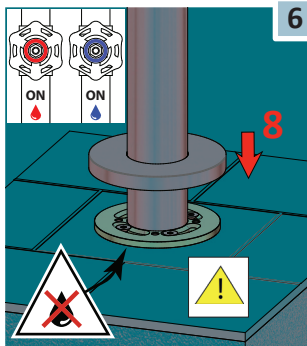
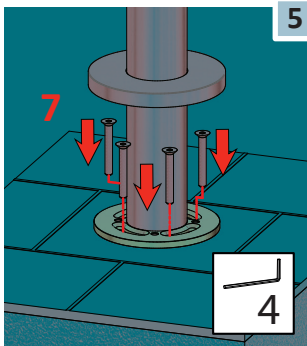
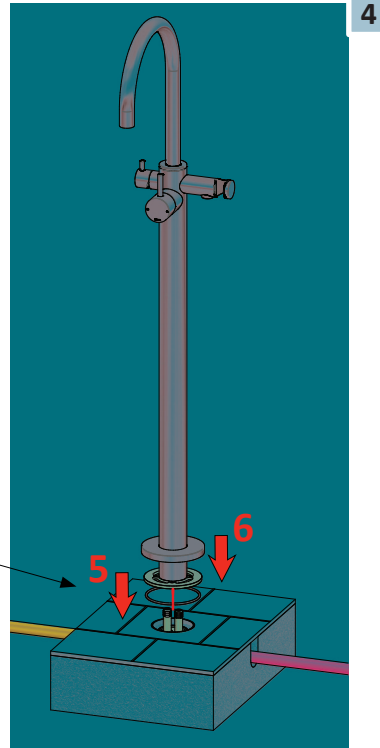
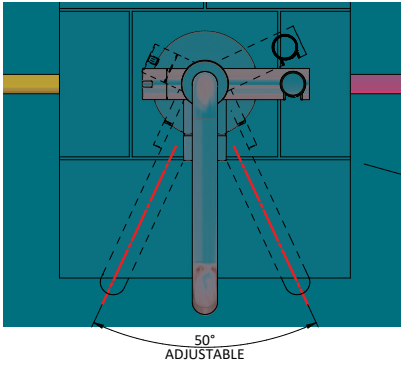
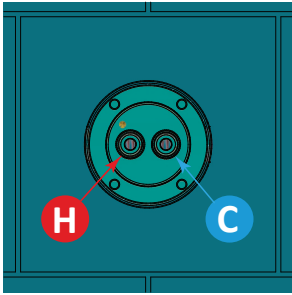
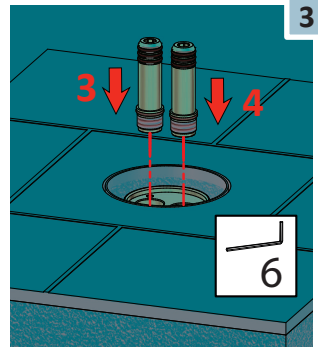
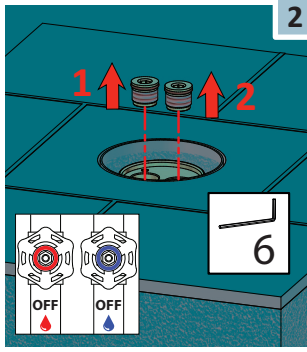
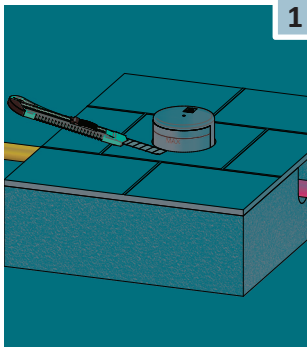
CB187EXT

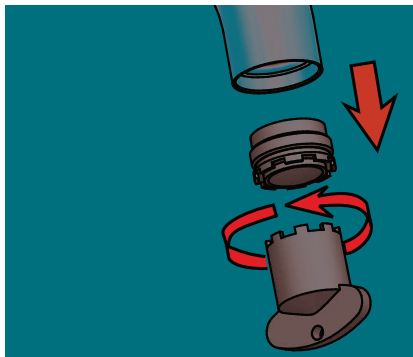
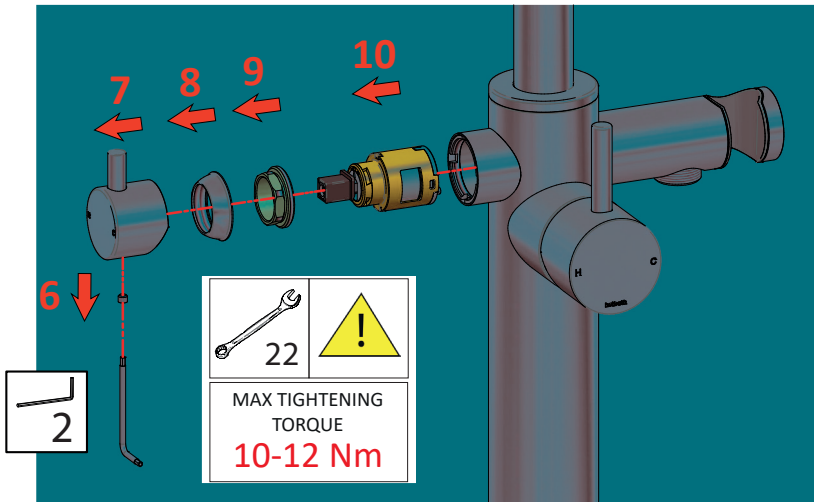
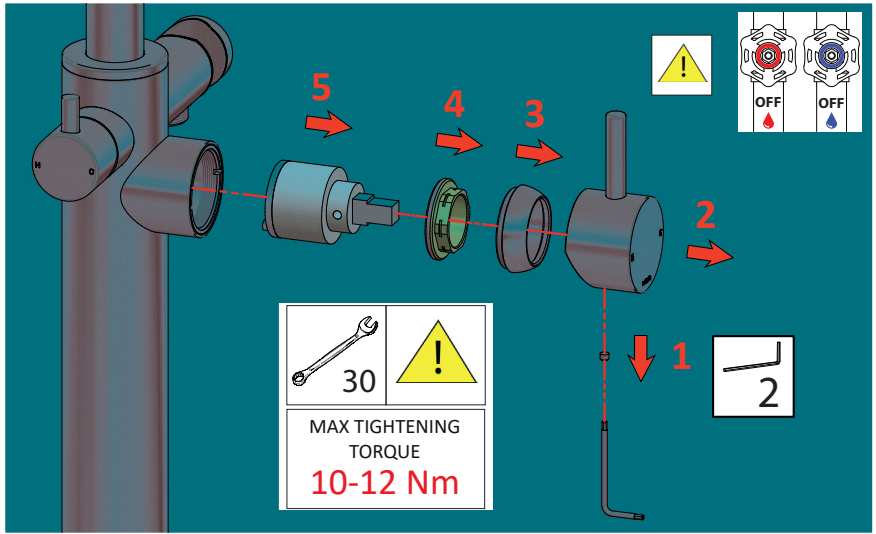


CX187EXT

BEFORE STARTING / PRIMA DI INIZIARE / AVANT DE COMMENCER / ANTES DE EMPEZAR / VOR DEM START / VOORDAT JE BEGINT

<p>P bar</p>	<p>MAX 5 1 MIN</p>	<p>3 1</p>	<p>15s</p>
<p>T °C</p>	<p>MAX 80°</p>	<p>60° 45°</p>	<p>ON</p>
			<p>OFF</p>





CLEANING - PULIZIA - NETTOYAGE - REINIGUNG - LIMPIEZA - REINIGING

		WARNING	✓		✗		
CR CHROME	GN BRUSHED NICKEL	Inoxidable electrolytic finish Finitura elettrolitica inossidabile Finition électrolytique inoxydable Inoxidierbare elektrolytische Ausführung Acabado electrolytico inoxidable Inoxidable elektrolitische afwerking					
	BB BRUSHED BRASS	Natural metal finish: patina will form over time Finitura di metallo naturale: si formerà una patina nel tempo Finition en métal naturel: une patine se formera avec le temps Natürliche Metallausführung: eine Patina wird sich mit der Zeit bilden Acabado de metal envejecido: la patina se formará con el tiempo Natuurlijke metalen afwerking: na verloop van tijd vormt zich patina					
	AB AGED BRASS	Aged metal finish: patina will form over time Finitura di metallo invecchiato: si formerà una patina nel tempo Finition en métal vieilli: une patine se formera avec le temps Gealterte Metallausführung: eine Patina wird sich mit der Zeit bilden Acabado de metal envejecido: la patina se formará con el tiempo Verouderde metalen afwerking: na verloop van tijd vormt zich patina					
	WH MATT WHITE	Varnished finish: subject to scratches if not properly handled Finitura verniciata: soggetta a deterioramento se non trattata correttamente Finition vernie: sujette aux rayures si ne pas traitée correctement Lackierte Ausführung: Kratzer bei unsachgemäßer Behandlung Acabado barnizado: puede rayarse si no se manipula correctamente Gelakte afwerking: gevoelig voor krassen als er niet goed mee wordt omgegaan					
	AI AGED IRON	Plated finish: subject to scratches if not properly handled Finitura placcata: soggetta a deterioramento se non trattata correttamente Finition plaquée: sujette aux rayures si ne pas traitée correctement Plattierte Ausführung: Kratzer bei unsachgemäßer Behandlung Acabado chapado: puede rayarse si no se manipula correctamente Geplateerde afwerking: gevoelig voor krassen als er niet goed mee wordt omgegaan					
BBP BRUSHED BRASS PVD	BCP BRUSHED COPPER PVD	Inoxidable PVD finish Finitura PVD inossidabile Finition PVD inoxydable Inoxidierbare PVD Ausführung Acabado PVD inoxidable Inoxidable PVD afwerking					
PBP POLISHED BLACK PVD	MBP MATT BLACK PVD						

TERMS OF SALE AND WARRANTY
CONDIZIONI DI VENDITA E GARANZIA
CONDITIONS DE VENTE ET GARANTIE

CONDICIONES DE VENTA Y GARANTÍA
VERKAUFSBEDINGUNGEN UND GARANTIE
VERKOOP- EN GARANTIEVOORWAARDEN

NETHERLANDS
BELGIUM
LUXEMBOURG
UK AND IRELAND

ALL COUNTRIES
(EXCEPTED BENELUX, UK AND IRELAND)

<https://www.hotbath.nl/garantie>

<https://hotbath.it/en/termsforsale>



Hotbath B.V.
Nieuwland Parc 210
2952 DC Alblasserdam
Nederland
E info@hotbath.nl
W hotbath.nl



Hotbath Srl
Via Marco Polo 135/D
I-55049 Viareggio
Italy
E info@hotbath.it
W hotbath.it

hotbath
italian bathroomware